



# REHAB RX TILT-IN-SPACE WHEELCHAIR

Highly configurable and geared towards the rehabilitation environment, inclusive of pressure care cushioning surfaces, the Rehab RX is designed for users with more complex needs.



CONTOURED  
BACKREST

CRASH TEST  
**APPROVED**  
AS/NZS 3696.19

**1** YEAR WARRANTY  
Components

**2** YEARS WARRANTY  
Frame

SWL  
**180kg**

SWL  
**23.8st**

### Adjustable and Removable Headrest

Offers customisable support for the user's head and neck

### Attendant-Operated Drum Brakes & Push-to-Lock Handbrakes

Provides both the user and attendant with safe and easy braking options

### Removable, Height, & Depth-Adjustable Armrest

Allows for versatile arm support and easy transfers

**Height & Depth-Adjustable Backrest** Supports proper posture and comfort based on individual needs

### Quick-Release, Height, & Depth-Adjustable 24" Rear Wheels & 6" Castors

Enhances manoeuvrability and allows for easier transport and storage

### Swing-Away, Removable, Padded, & Elevating Articulating Legrest

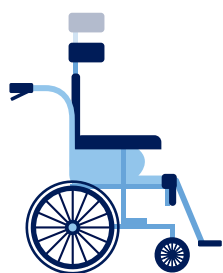
Ensures comfort and easy access for transfers or adjustments

### Standard Anti-Tippers

Adds an extra layer of safety to prevent tipping



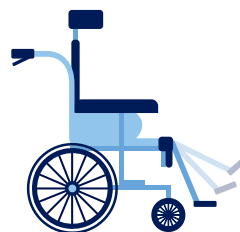
## ADJUSTMENTS



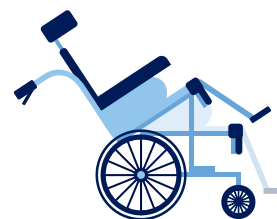
Backrest Height



Seat & Backrest Depth



Elevating Legrest



Tilt-In-Space  
26° Tilt | 30° Recline

## Discover Our Exclusive Range of Accessories

**IV Pole**  
WCA848280

**Safety Lap Belt**  
WCA848300

**Oxygen Bottle Holder**  
WCA848290

**Tray Table**  
WCA848570

**Stump Support**  
Various sizes

REHAB RX WHEELCHAIR	Seat Width mm / in	Seat Depth mm / in	Front Seat Height mm / in	Rear Seat Height mm / in	Overall Width mm / in	Backrest Height mm / in	Armrest Height mm / in	Min. Chair Weight kg / lbs	SWL kg / st
MWS449710	410 - 460/ 16 - 18	440 - 530/ 17.3 - 20.8	410 - 440/ 16.1 - 17.3	400 - 475/ 15.8 - 18.7	690/ 27.2	460 - 710/ 18 - 28	310 - 460/ 12.2 - 18.1	41/ 90.4	180/ 28.3
MWS449720	460 - 510/ 18 - 20	440 - 530/ 17.3 - 20.8	410 - 440/ 16.1 - 17.3	400 - 475/ 15.8 - 18.7	740/ 29.1	460 - 710/ 18 - 28	310 - 460/ 12.2 - 18.1	43/ 94.8	180/ 28.3
MWS449740	510 - 560/ 20 - 22	470 - 560/ 18.5 - 22.1	410 - 440/ 16.1 - 17.3	400 - 475/ 15.8 - 18.7	790/ 31.1	460 - 710/ 18 - 28	310 - 460/ 12.2 - 18.1	47.2/ 104.1	180/ 28.3

\*Range of motion dimensions are accurate to a +/-10mm tolerance

ASFY1411\_241024