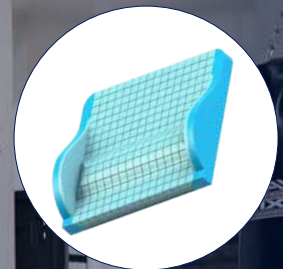




# REHAB RX

## TILT-IN-SPACE WHEELCHAIR

Highly configurable and geared towards the rehabilitation environment, inclusive of pressure care cushioning surfaces, the Rehab RX is designed for users with more complex needs.



CONTOURED  
BACKREST

CRASH TEST  
**APPROVED**  
AS/NZS 3696.19

**1** YEAR WARRANTY  
Components

**2** YEAR WARRANTY  
Frame



**Adjustable and Removable Headrest:** Offers customisable support for the user's head and neck

**Brake Options for Rear and Carer:** Dual systems, including push-to-lock and drum brakes, provide users with independence and carers with added safety control

**Customisable Seating Dimensions:** Adjustable seat width, depth, backrest height, armrest position, and headrest placement allow for tailored postural support to meet individual user needs

**Removable Rear Wheels and Height-adjustable Castors:** Enhance manoeuvrability, simplify storage in tight spaces, and support vehicle loading

**Elevating and Swing-away Legrests:** Assist with leg positioning to improve blood circulation, support foot and ankle posture, and enable easier side or front transfers

**Anti-tippers Included as Standard:** Increase rear stability when tilting or navigating slopes and ramps



## ACCESSORIES

IV Pole WCA848280

Safety Lap Belt WCA848300

Tray Table WCA848570

Stump Support Various sizes

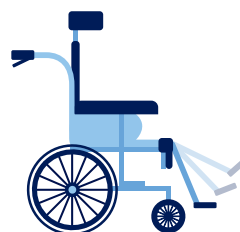
## ADJUSTMENTS



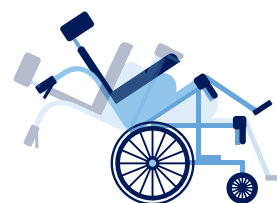
Backrest Height



Seat and Backrest Depth



Elevating Legrest



Tilt-in-space  
26° Tilt | 30° Recline

REHAB RX WHEELCHAIR	Seat Width mm / in	Seat Depth mm / in	Front Seat Height mm / in	Rear Seat Height mm / in	Overall Width mm / in	Backrest Height mm / in	Armrest Height mm / in	Min Chair Weight kg / lbs	SWL kg / st
MWS449710	410 - 460/ 16 - 18	440 - 530/ 17.3 - 20.8	410 - 440/ 16.1 - 17.3	400 - 475/ 15.8 - 18.7	690/ 27.2	460 - 710/ 18 - 28	310 - 460/ 12.2 - 18.1	41/ 90.4	180/ 28.3
MWS449720	460 - 510/ 18 - 20	440 - 530/ 17.3 - 20.8	410 - 440/ 16.1 - 17.3	400 - 475/ 15.8 - 18.7	740/ 29.1	460 - 710/ 18 - 28	310 - 460/ 12.2 - 18.1	43/ 94.8	180/ 28.3
MWS449740	510 - 560/ 20 - 22	470 - 560/ 18.5 - 22.1	410 - 440/ 16.1 - 17.3	400 - 475/ 15.8 - 18.7	790/ 31.1	460 - 710/ 18 - 28	310 - 460/ 12.2 - 18.1	47.2/ 104.1	180/ 28.3

Note: Range of motion dimensions are accurate to a +/-10mm tolerance

ASFY1413 080725