

New!

GO CHAIR

Get Out There!

GET OUT THERE IN STYLE
WITH THE ALL-NEW GO-CHAIR



NEW, dual under-seat compartments for convenient storage

Shown in:
Ruby Red

The all-new Go-Chair is re-engineered from the ground up, offering a bold new style available in a choice of contemporary colors. Enhanced performance and comfort, along with feather-touch disassembly, allows you to enjoy light-weight travel and independence on the go. With an increased weight capacity of 136 kg (300 lbs.) and a sleek, bold look, the new Go-Chair makes travel easy.



One-hand "Feather Touch" disassembly

Ruby Red

Pearl White



Colour Options

PRIDE[®]
MOBILITY
LIVE YOUR BEST[®]

SPECIFICATIONS

GO CHAIR

Drive Wheels	20.00 cm (8") (solid)
Front Castors	15.24 cm (6") (solid)
Rear Anti-tips	7.62 cm (3") (solid)
Maximum Speed ¹	Up to 5.95 km/h (3.7 mph)
Ground Clearance ²	4.2 cm (1.6") at anti-tip bracket 4.8 cm (1.9") at frame
Turning Radius ²	64.5 cm (25.4") with foot platform
Length	83.82 cm (33") with front rigging
Width ⁶	57.4 cm (22.6")
Seat Type	Foldable, compact, lightweight
Seat to Ground Height	55.9 cm - 58.4 cm (22"-23")
Batteries ^{3,5}	(2) 18 Ah, 12 V, deep-cycle
Range ^{1,4}	Up to 14.06 km (8.74 miles)
Charger	Off-board, 2 amp
Electronics	40 amp, PG GC3 (non-programmable)
Weight Capacity	136 kg (300 lbs.)
Base Weight	30 kg (67 lbs.) (front & rear)
Standard Seat Weight	13.6 kg (30 lbs.)
Battery Pack Weight ⁵	14.06 kg (31 lbs.)
Suspension	Limited
Heaviest Piece	16.3 kg (36 lbs.) (rear)

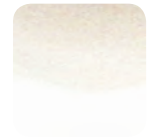
- ¹ Varies with user weight, terrain type, battery amp-hour (AH), battery charge, battery condition tire type and condition. These specifications can be subject to a variance of +10%, -5%.
- ² Due to manufacturing tolerances and continual product improvement, this specification can be subject to a variance of (+ or -) 3%.
- ³ AGM or Gel-Cell type required. *See "Batteries and Charging."
- ⁴ Tested in accordance with ANSI/RESNA, WC Vol 2, Section 4 & ISO 7176-4 standards. Results derived from theoretical calculation based on battery specification and drive system performance. Test conducted at maximum weight capacity.
- ⁵ Battery weight may vary based on manufacturer.
- ⁶ Dimensions listed are for power base only. Overall measurements will vary based on seating and accessory selections.

NOTE: This product conforms to all applicable ANSI/RESNA and ISO 7176 series standards. This product is not coded by DME PDAC or does not meet criteria: K0899. All specifications subject to change without notice.

4-wheel

FEATURES

- Choice of 2 colours
- 46 x 43 cm (18" x 17"), 5-point swivel seat with latch release
- Increased 136 kg (300 lb.) weight capacity
- Faster speed - up to 5.95 km/h (3.7 mph)
- Larger, 18 amp batteries
- Improved agility - longer wheel base; wider stance; compact turning radius 64.5 cm (25.4")
- Dual swing-away, under seat storage bins
- Larger, height & width adjustable armrests
- Larger footplate
- One hand feather-touch disassembly
- 152 cm (60") lap belt



Colour Options

PWS654200RE

PWS654200WH



AU_GOCHAIR-SS-09-13-16

PRIDE[®]
MOBILITY
LIVE YOUR BEST[®]

GOGO[®]
TRAVEL MOBILITY

Distributed by:

aidacare
HEALTHCARE EQUIPMENT

1300 133 120

www.aidacare.com.au

AFY167.1 231019